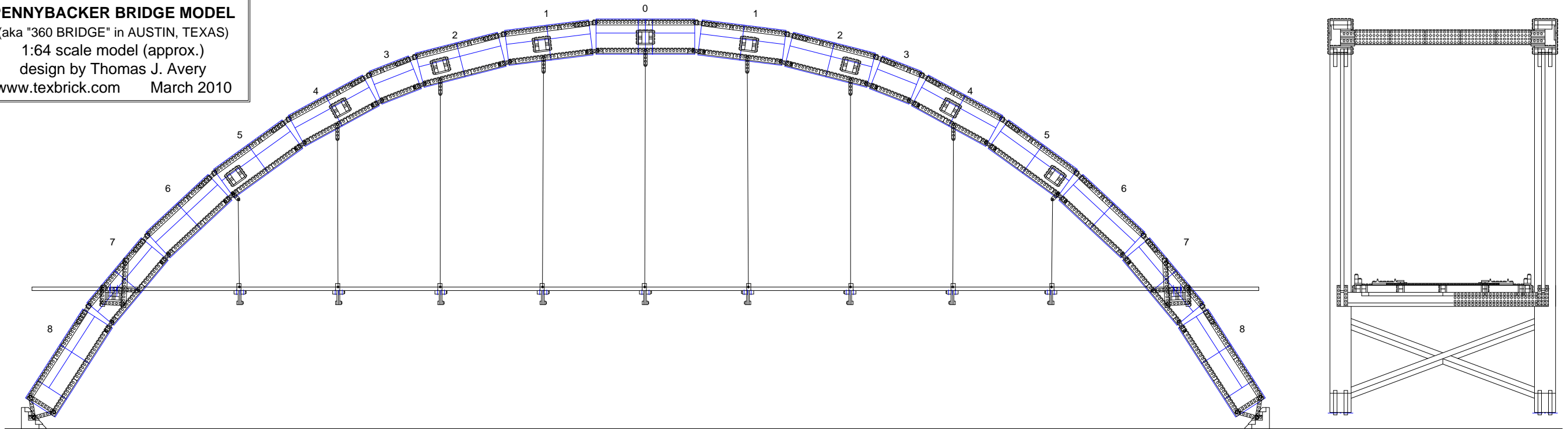
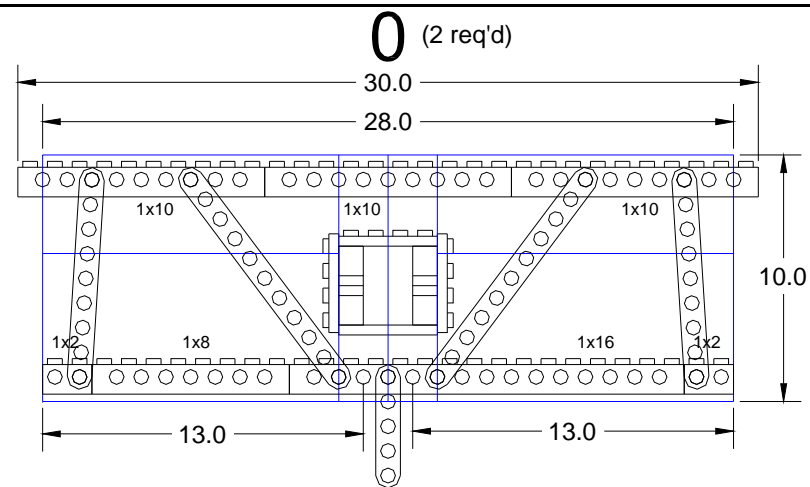
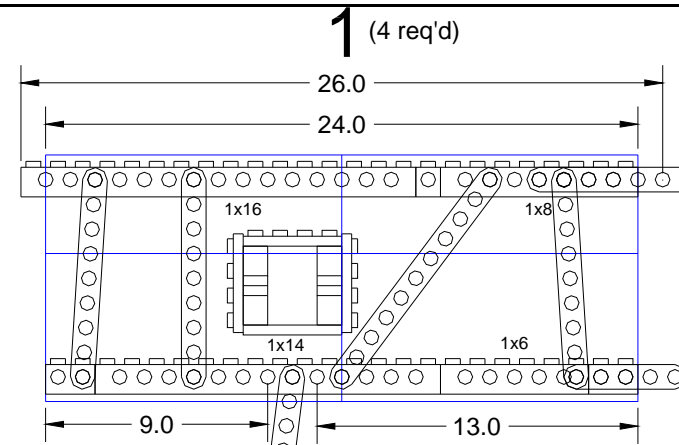


PENNYBACKER BRIDGE MODEL
(aka "360 BRIDGE" in AUSTIN, TEXAS)
1:64 scale model (approx.)
design by Thomas J. Avery
www.texbrick.com March 2010

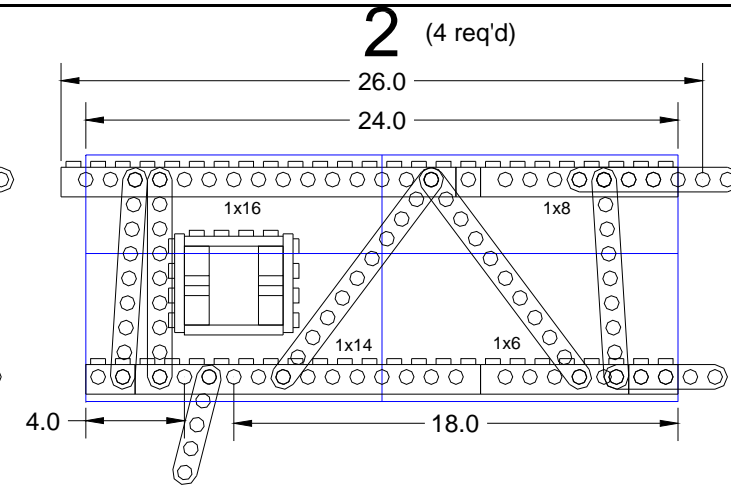




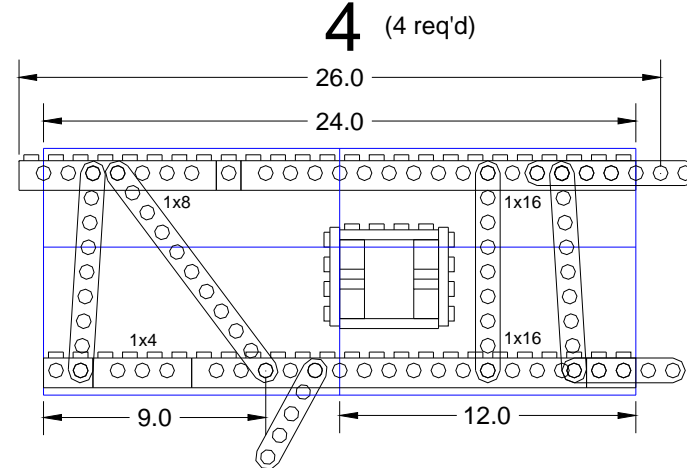
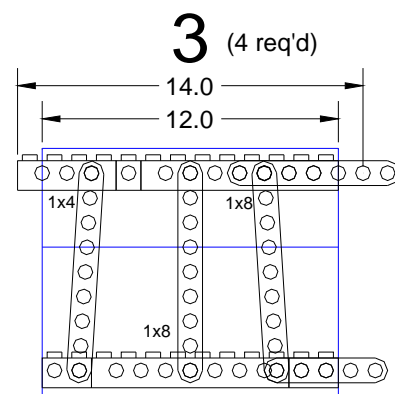
Back Cover = two 10x12 areas



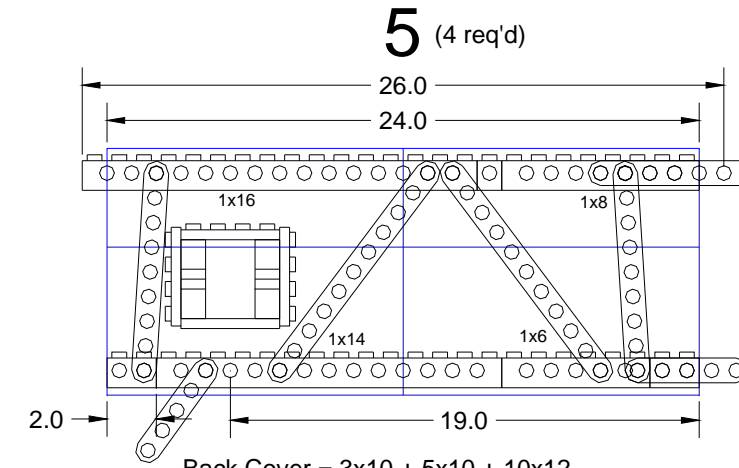
Back Cover = 10x12 + 8x10



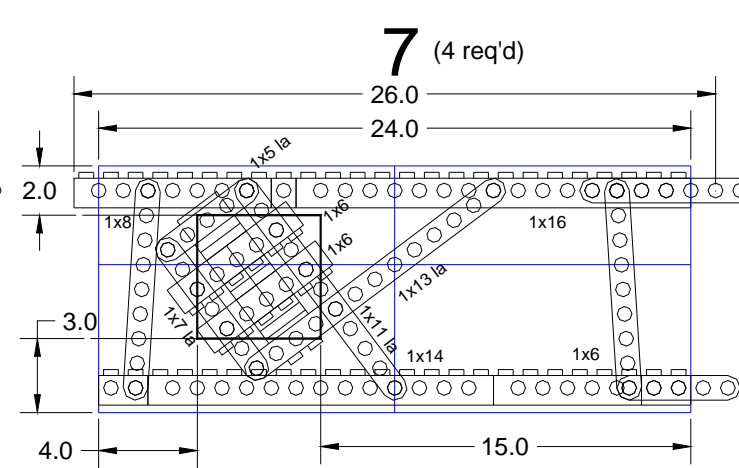
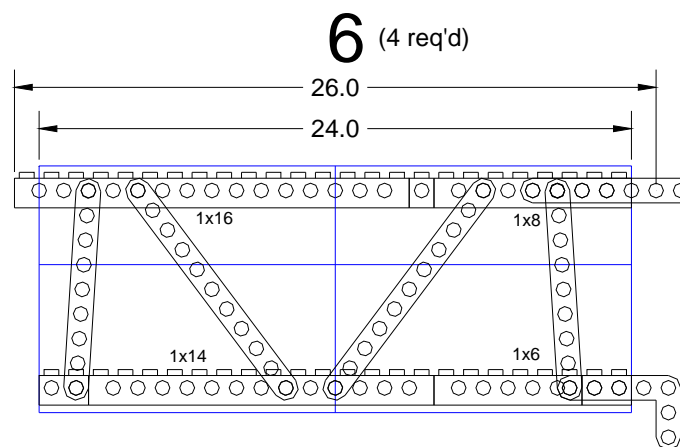
Back Cover = 10x12 + 4x10 + 4x10



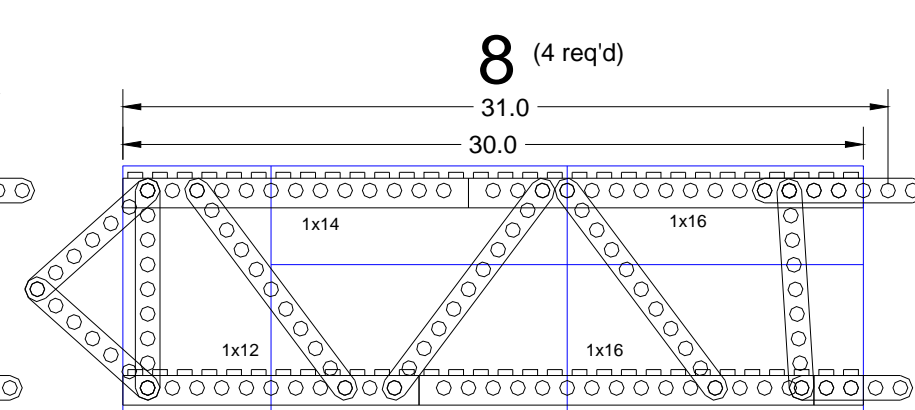
Back Cover = 10x12 + 8x10



Back Cover = 3x10 + 5x10 + 10x12

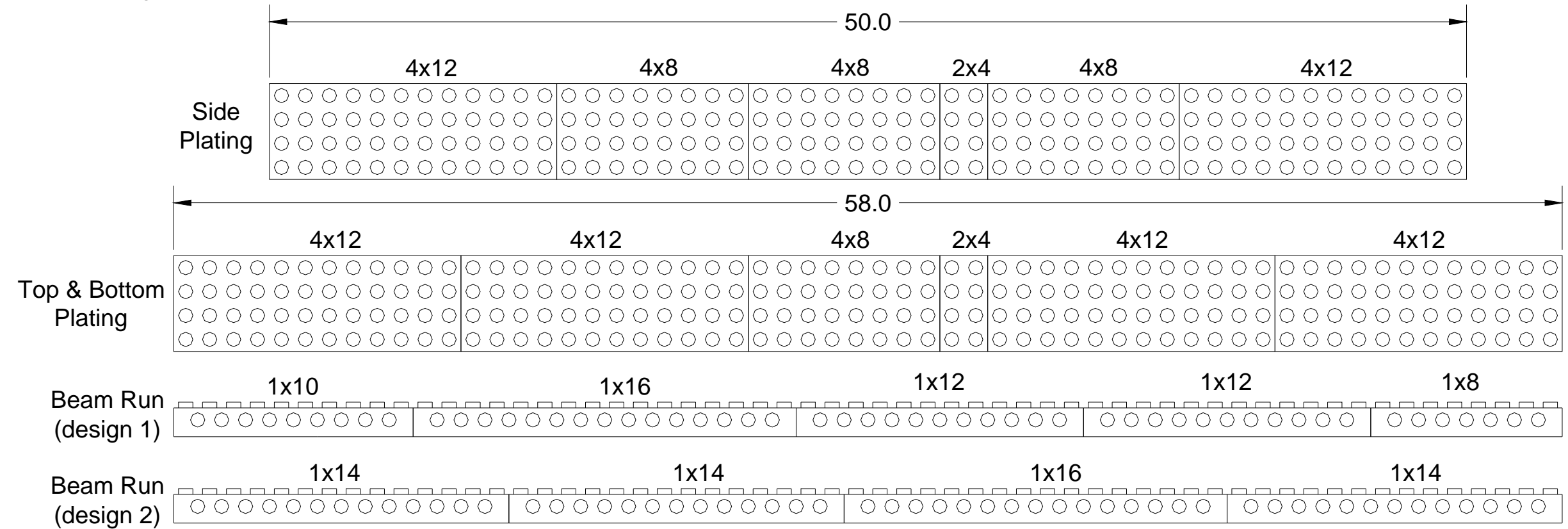
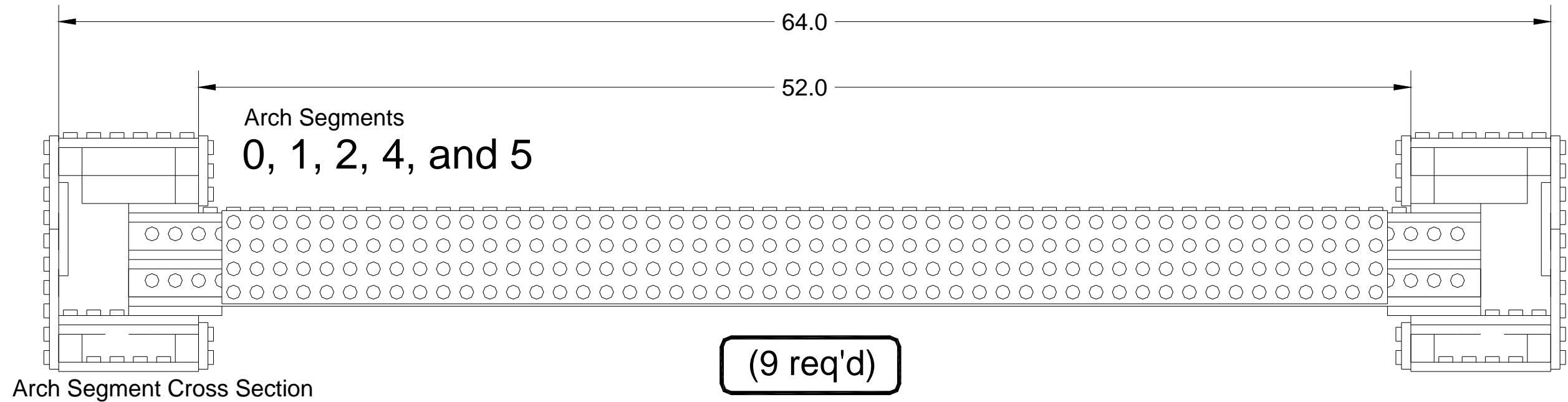


Back Cover = 4x10 + 4x10



Back Cover = 4x10 + 4x10

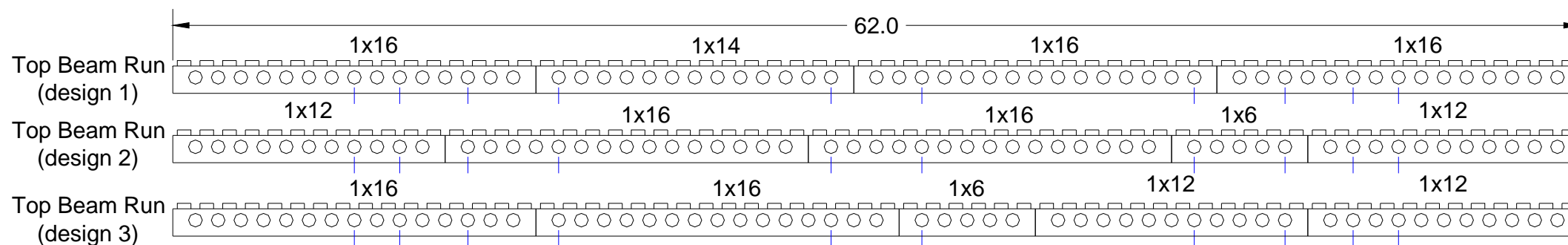
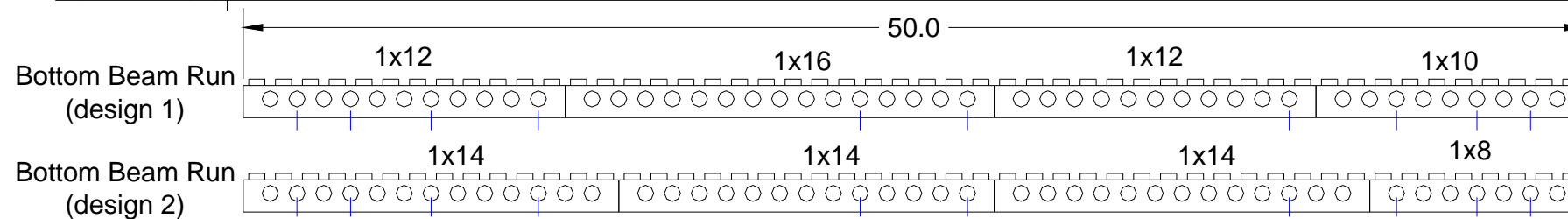
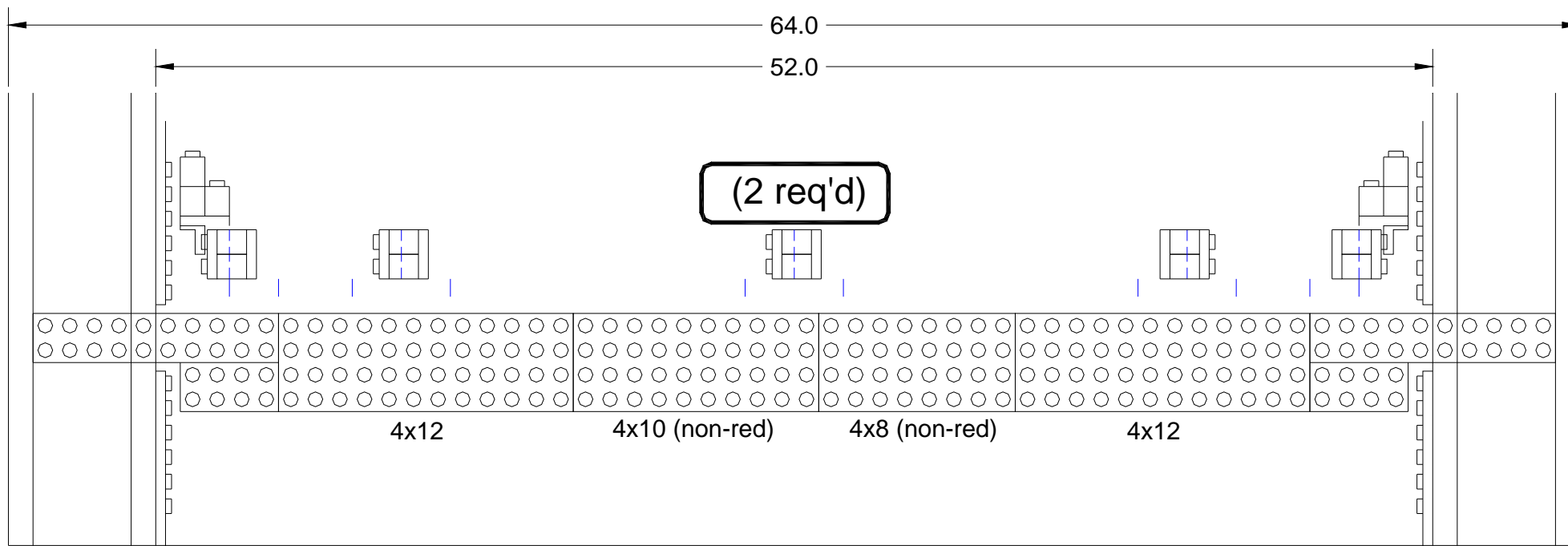
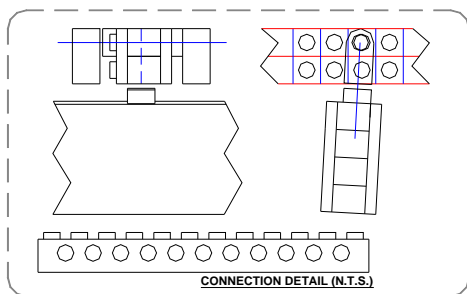
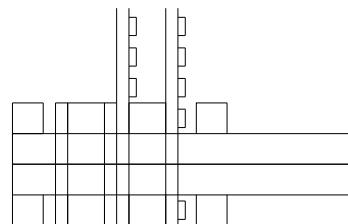
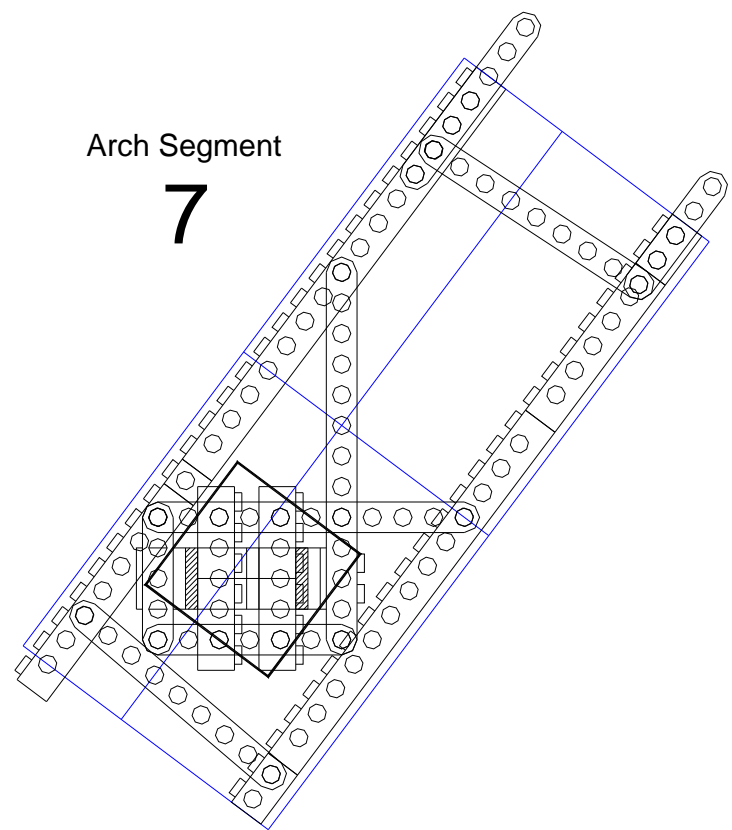
ARCH SEGMENTS - BOX GIRDERS



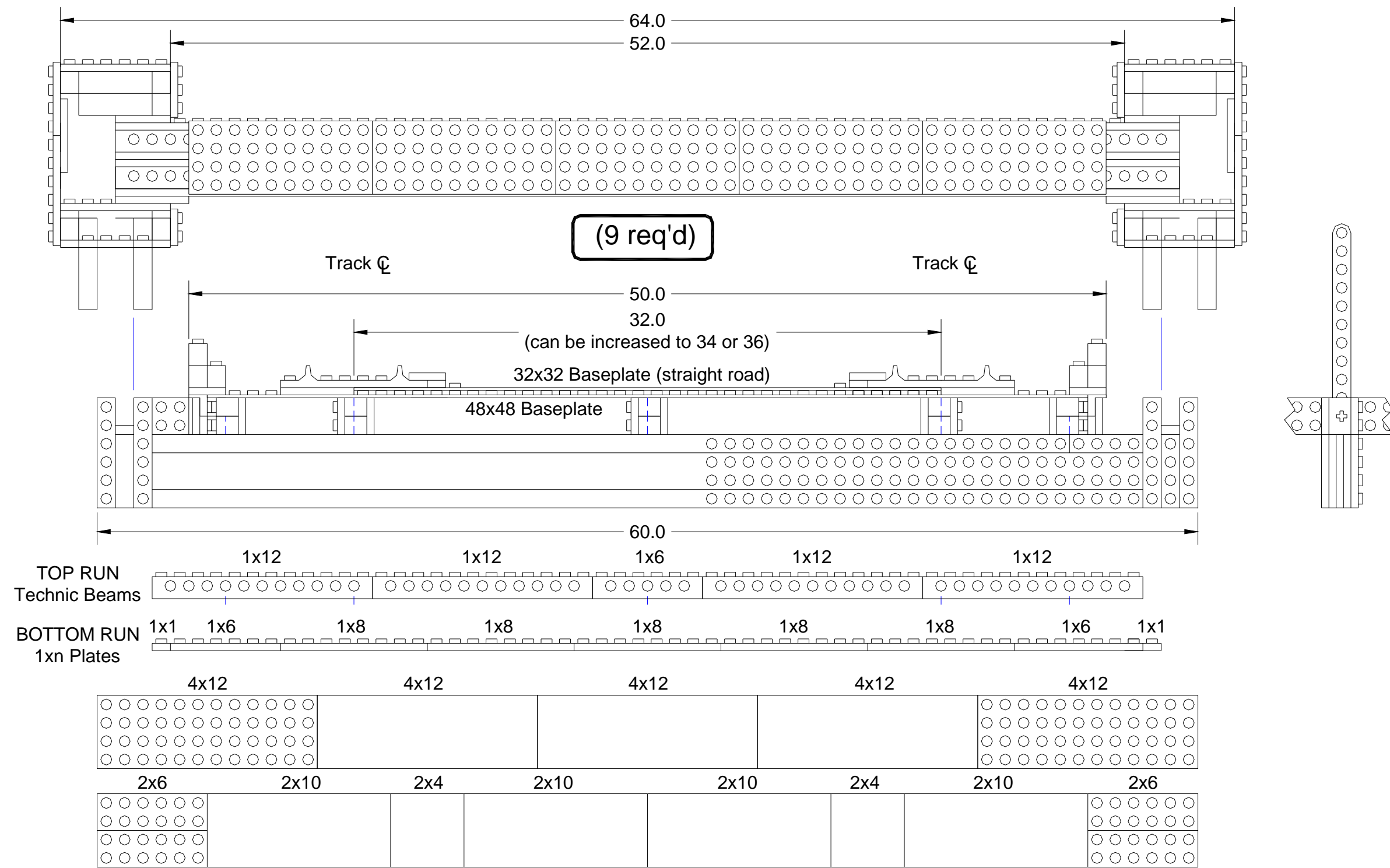
LATERAL ARCH BOX GIRDERS

Arch Segment

7

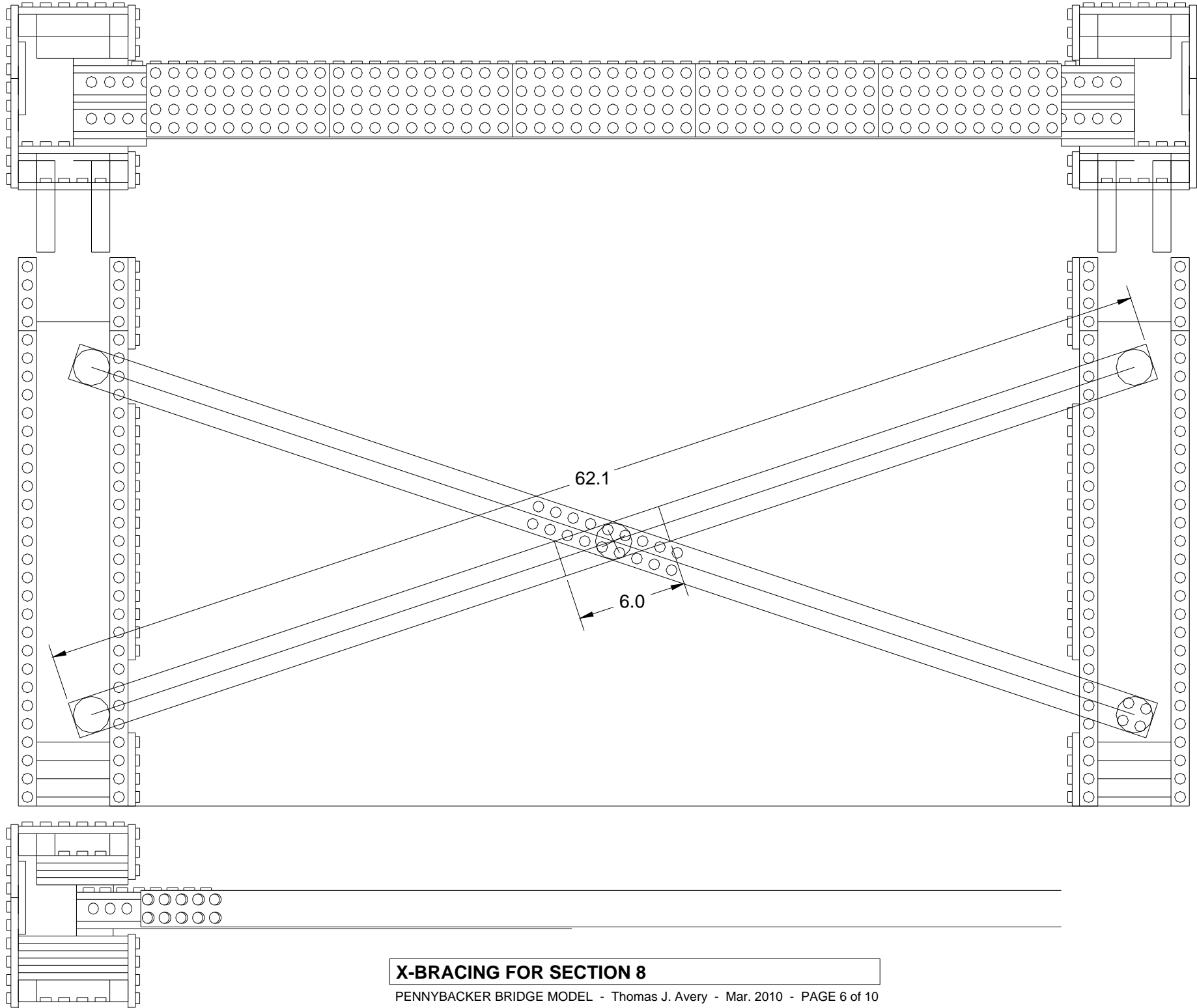
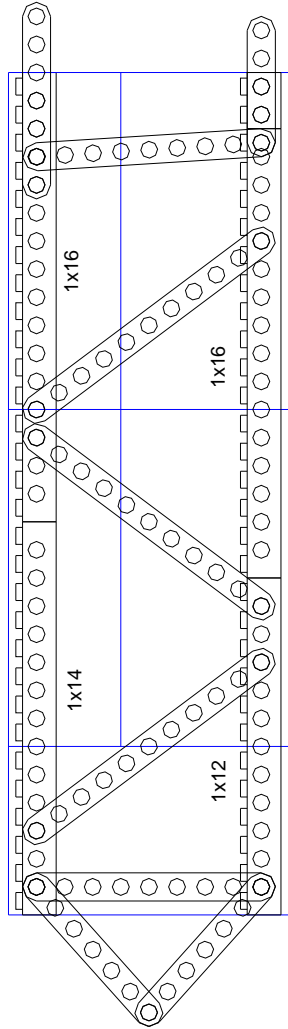


LATERAL ARCH GIRDER - SPECIAL UNDER-DECK SECT.



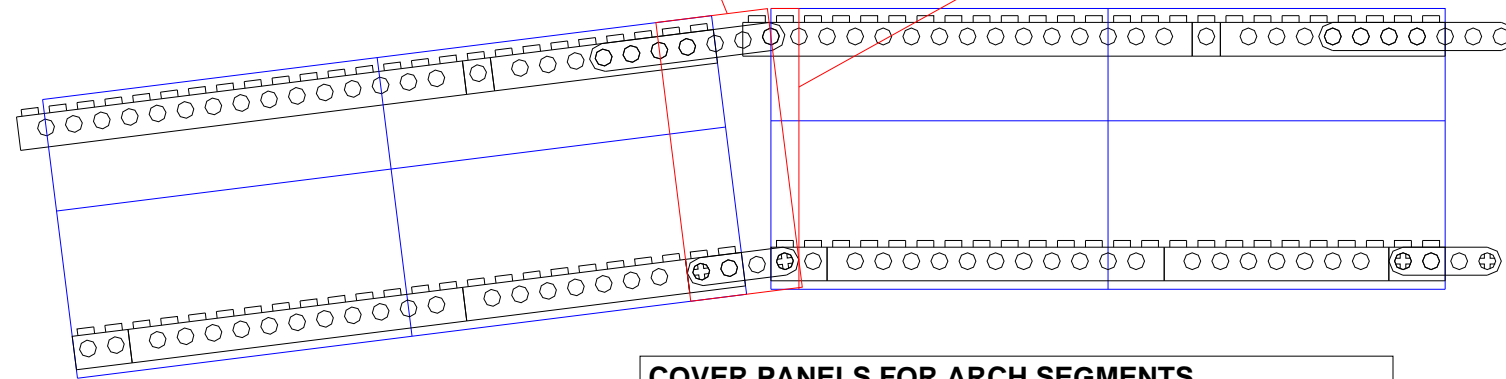
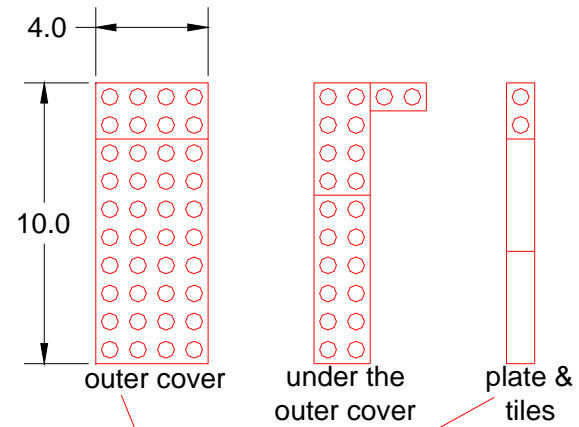
LATERAL DECK GIRDERS

8



X-BRACING FOR SECTION 8

(64 req'd)



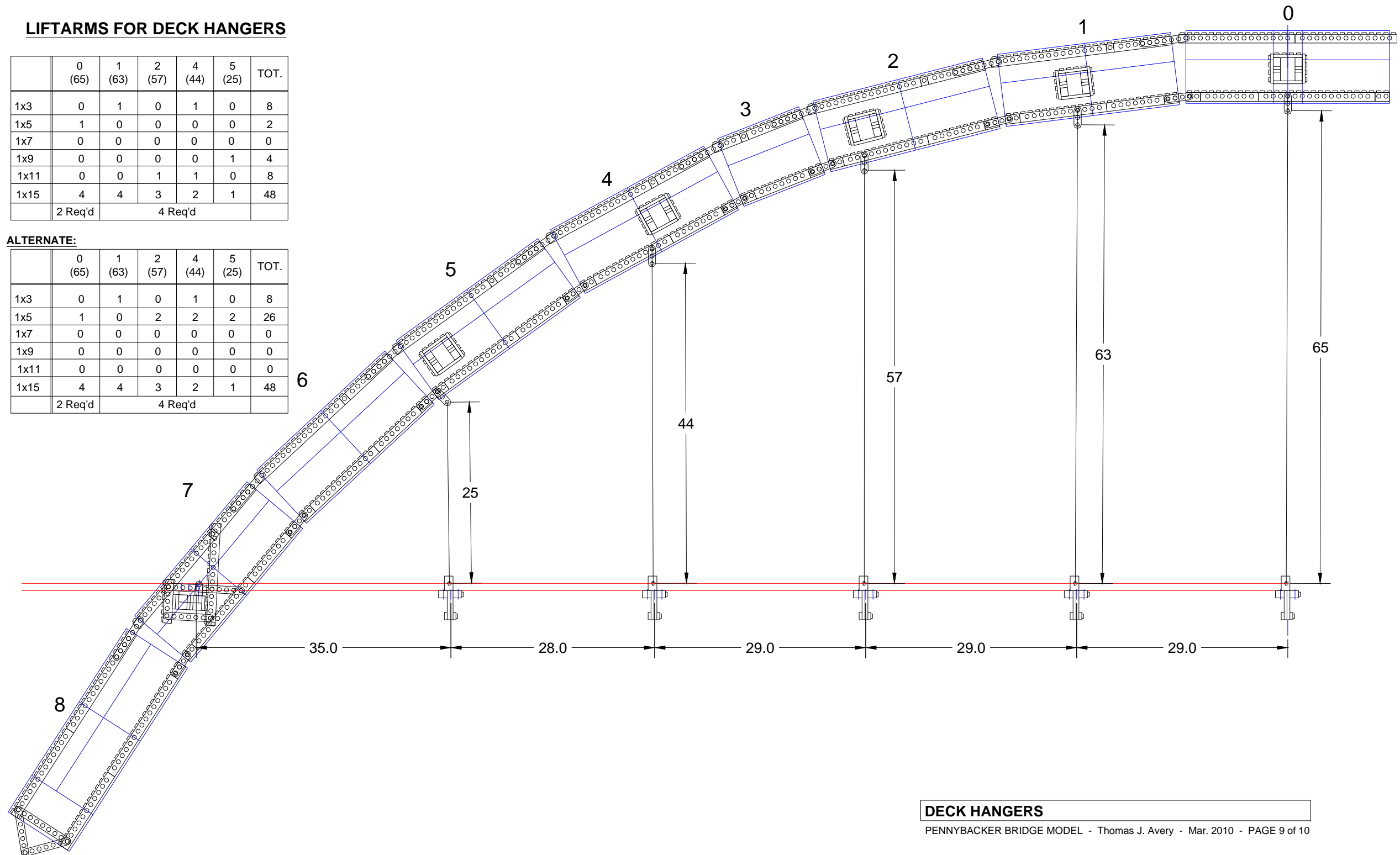
COVER PANELS FOR ARCH SEGMENTS

LIFTARMS FOR DECK HANGERS

	0 (65)	1 (63)	2 (57)	4 (44)	5 (25)	TOT.
1x3	0	1	0	1	0	8
1x5	1	0	0	0	0	2
1x7	0	0	0	0	0	0
1x9	0	0	0	0	1	4
1x11	0	0	1	1	0	8
1x15	4	4	3	2	1	48
	2 Req'd		4 Req'd			

ALTERNATE:

	0 (65)	1 (63)	2 (57)	4 (44)	5 (25)	TOT.
1x3	0	1	0	1	0	8
1x5	1	0	2	2	2	26
1x7	0	0	0	0	0	0
1x9	0	0	0	0	0	0
1x11	0	0	0	0	0	0
1x15	4	4	3	2	1	48
	2 Req'd		4 Req'd			



DECK HANGERS

